

760-246-4878

SINCE 1954

VALEW

QUALITY TRUCK BODIES

WWW.VALEW.COM

DUMP TRUCK MANUAL



CAUTION: READ BEFORE OPERATING

VALEW HOIST AND BODY OPERATION

- IMPROPER OPERATION OF THIS UNIT CAN RESULT IN SERIOUS INJURY. DO NOT OPERATE UNLESS YOU HAVE BEEN PROPERLY INSTRUCTED, HAVE READ, AND ARE FAMILIAR WITH THE OPERATING INSTRUCTIONS. IF YOU DO NOT HAVE A COPY OF THESE INSTRUCTIONS, PLEASE OBTAIN THEM FROM YOUR EMPLOYER, DISTRIBUTOR, OR LEASE HOLDER, AS APPROPRIATE BEFORE YOU ATTEMPT TO OPERATE THIS UNIT.
- DO NOT DUMP ON UNLEVEL GROUND OR GROUND HAVING INSUFFICIENT FOOTING TO MAINTAIN THE UNIT LEVEL, FOR EXAMPLE, GROUND THAT HAS BEEN RECENTLY EXCAVATED AND/OR REFILLED, AND WHICH IS SOFT AND UNCOMPACTED.
- BE CERTAIN THAT THE VEHICLE IS PROPERLY AND SECURELY PARKED BEFORE USING THE HOIST.
- BE CERTAIN THAT ADEQUATE OVERHEAD CLEARANCE IS ASSURED BEFORE DUMPING (TO CLEAR POWER LINES OR ANY OTHER OVERHEAD OBSTRUCTIONS).
- NEVER MOVE THE VEHICLE WHEN THE BODY IS IN A RAISED POSITION.
- ALWAYS INSPECT THE HOIST AND BODY BEFORE USING THE UNIT. IF THERE ARE SIGNS OF IMPROPER OR LACK OF MAINTAINANCE, DAMAGE TO ANY PART, OR LOOSE MOUNTING, DO NOT USE THE HOIST. DO NOT ATTEMPT YOUR OWN REPAIR UNLESS YOU ARE SPECIFICALLY TRAINED.
- DO NOT MOVE THE VEHICLE WHEN THE PTO IS ENGAGED.
- DO NOT OVERLOAD! THE PAYLOAD CAPACITY OF THE COMPLETED VEHICLE WILL BE CONTROLLED BY ONE OF THE FOLLOWING CRITERIA. THE CRITERIA WHICH YIELDS THE LOWEST PERMISSIBLE CAPACITY DICTATES THE MAXIMUM PAYLOAD CAPACITY OF THE VEHICLE:
 - 1.) BY THE HOIST CAPACITY OF THE BODY AND PAYLOAD, AS ESTABLISHED BY THE MANUFACTURER'S LITERATURE AND/OR OPERATIONS MANUAL, IF THE HOIST CAPACITY IS LESS THAN EITHER THE GROSS AXLE WEIGHT RATING (GAWR), OR THE GROSS VEHICLE WEIGHT RATING (GVWR).
 - 2.) BY THE GROSS AXLE WEIGHT RATING (GAWR) AS STATED ON THE CERTIFICATION LABEL, FOR ANY OF THE VEHICLE AXLES, EVEN THOUGH THE HOIST, BODY AND PAYLOAD OR THE GROSS VEHICLE WEIGHT RATING (GVWR) IS GREATER.
 - 3.) BY THE GROSS VEHICLE WEIGHT RATING (GVWR) AS STATED ON THE CERTIFICATION LABEL, EVEN THOUGH THE HOIST, BODY AND PAYLOAD CAPACITY OR THE GROSS AXLE WEIGHT RATING (GAWR) FOR ANY OF THE AXLES MAY BE GREATER.
- EACH LOAD SHOULD BE LOADED IN A STABLE POSITION EQUALLY DISTRIBUTED THROUGH THE BODY.
- DO NOT LEAVE THE VEHICLE DURING THE DUMPING CYCLE. REMAIN AT THE CONTROLS. RELEASE THE TAILGATE CONTROLS BEFORE LIFTING THE BODY.
- NEVER STAND OR MOVE THROUGH OR ALLOW ANYONE ELSE TO STAND OR MOVE THROUGH THE AREA WHEN THE HOIST OPERATES, OR INTO AN AREA WHERE AN UPSET LOAD, OR THE DISCHARGE FROM THE BODY MAY FALL.
- WHEN THE BODY IS STORED OR NOT IN USE, THE BODY MUST BE IN A FULL LOWERED POSITION, AND RESTING ON THE CHASSIS OR HOIST FRAME. IGNITION KEY SHOULD BE REMOVED TO AVOID TAMPERING BY UNAUTHORIZED PERSONNEL.
- WHENEVER THE BODY IS IN AN ELEVATED OR RAISED POSITION FOR ANY REPAIRS, ADJUSTMENTS, SERVICE, OR ANY OTHER REASON, IT MUST BE SECURELY BLOCKED OR PROPPED SO THAT IT CANNOT FALL. HOWEVER, UNDER NO CIRCUMSTANCES SHOULD ANY REPAIR, ADJUSTMENTS OR SERVICE BE ATTEMPTED ON A LOADED BODY WHEN IT IS IN A RAISED POSITION.
- REGULARLY INSPECT THE VEHICLE TO SEE THAT ALL SAFETY EQUIPMENT REQUIRED BY FEDERAL, STATE, COUNTY, MUNICIPAL AND/OR LOCAL REGULATIONS HAVE BEEN INSTALLED, ARE OPERABLE, AND USED.



10/5 YARD DUMP

(5 YARD DUMP SHOWN)

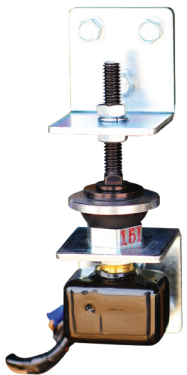
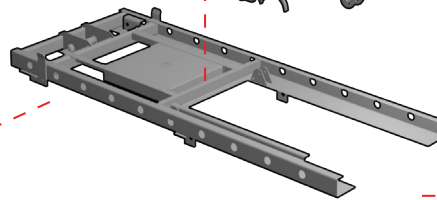
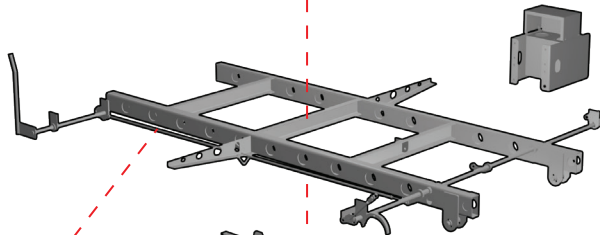
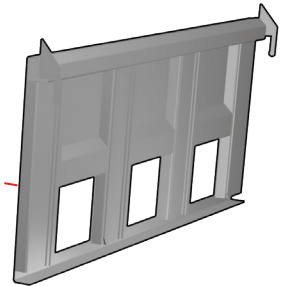
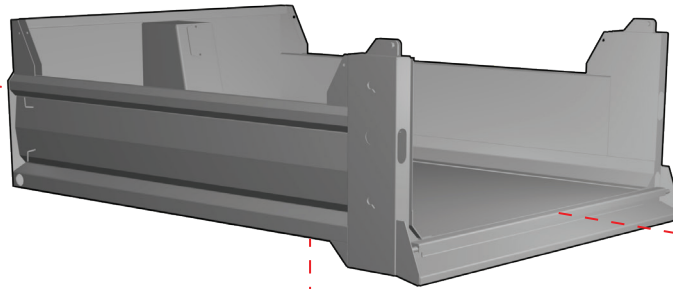
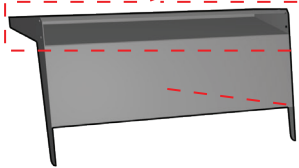


PULLTARP PULL ROD
SKU # 200602

12' TARP ASSEMBLY
(5 YARD BODY)
SKU # 200603

18' TARP ASSEMBLY
(10 YARD BODY)
SKU # 200604

12' PULLTARP MESH
ONLY
SKU # 200601



DUMP BODY-UP SWITCH KIT
SKU # 200101



REFLECTOR BAR
SKU # 103514

MUDFLAPS
SKU # 103516

MUDFLAP BOTTOM
BRACKET
SKU # 703188



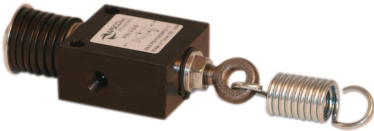
PUSH AND PULL VALVE
SKU # 200610



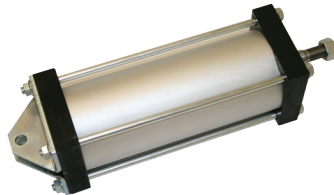
FOUR WAY VALVE
SKU # 200609



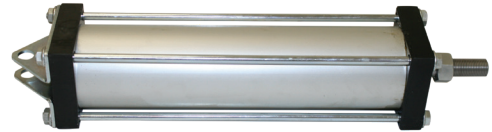
DUAL FOUR WAY VALVE
SKU # 200608



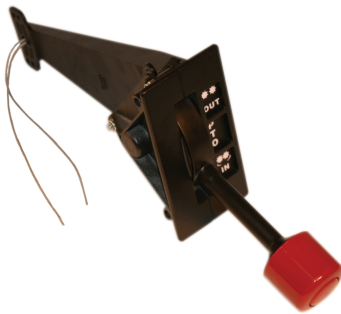
APSCO AIR VALVE
SKU # 200607



APSCO CYLINDER FOR
DUMP LATCHES
SKU # 200607



HIGH LIFT CYLINDER
SKU # 200307



MANUAL CONTROL RED
DUMP PTO HANDLE
SKU # 200201



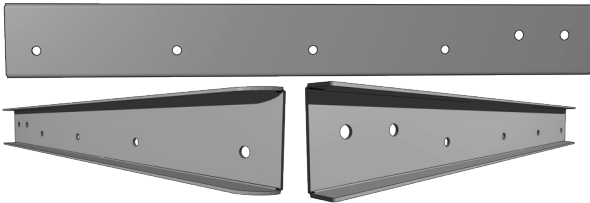
MANUAL CONTROL BLACK
DUMP HANDLE
SKU # 200202

For more parts please visit parts.valew.com
or give us a call at 844.208.2539



10 YARD/ 5 YARD DUMP BODY HITCH PLATE & MISC

MUD FLAP BRACKET
LEFT HAND SKU # 703215
RIGHT HAND SKU # 703216



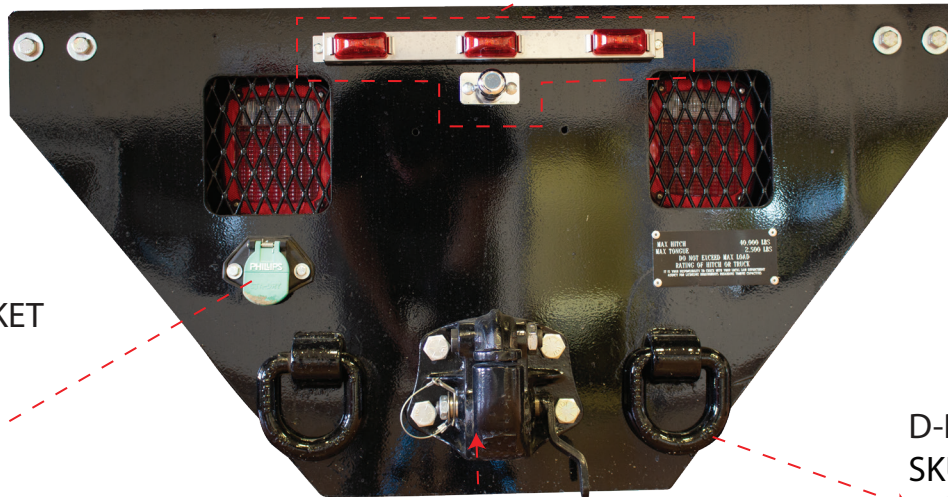
RED LIGHT BAR
SKU # 200276



LICENSE PLATE
LIGHT
SKU # 500268



SEVEN WAY SOCKET
SKU # 500246



D-RING
SKU # 200411



PH 45 TON HITCH
(10 YARD BODY)
SKU # 200402



PH 15 PINTLE HITCH
(5 YARD BODY)
SKU # 200401